



## Product Specifications

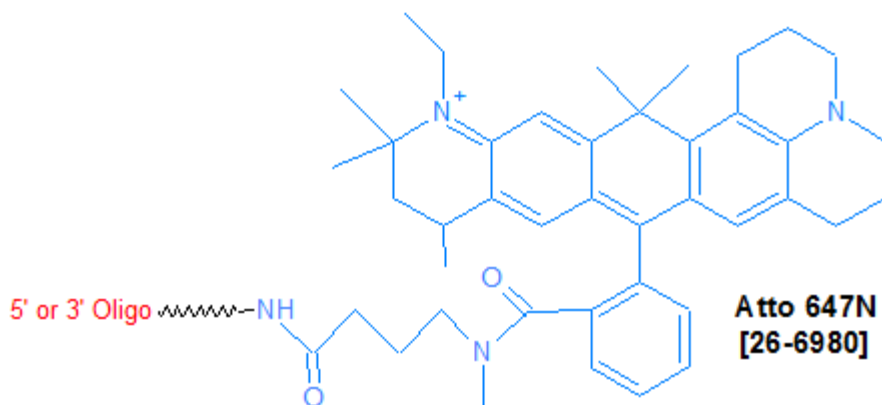
Custom Oligo Synthesis, antisense oligos, RNA oligos, chimeric oligos, Fluorescent dyes, Affinity Ligands, Spacers & Linkers, Duplex Stabilizers, Minor bases, labeled oligos, Molecular Beacons, siRNA, phosphonates Locked Nucleic Acids (LNA); 2'-5' linked Oligos

## Oligo Modifications

For research use only. Not for use in diagnostic procedures for clinical purposes.

### Atto 647-N

|                          |                  |
|--------------------------|------------------|
| Category                 | Fluorescent Dyes |
| Modification Code        | Atto647-N        |
| Reference Catalog Number | 26-6980          |
| 5 Prime                  | Y                |
| 3 Prime                  | Y                |
| Internal                 | Y                |
| Molecular Weight(mw)     | 628              |



**Click here for a list of fluorophores.**

This modification is a post synthesis conjugation to a primary amino group thus an additional modification with an amino group is required. A C3, C6 or C12 amino group can be placed at the 5' or for the 3' end a C3 or C7 amino and for internal positions an amino modified base is used, e.g Amino dT C6.

Yield of Post Synthesis NHS, Maleimide & Click Ligand Conjugation\* Oligo Scale of Synthesis Yield, nmols 50 nmol 2 nmol 200 nmol 5 nmol 1 umol 16 nmol 2 umol 30 nmol 5 umol 75 nmol 10 umol 150 nmol 15 umol 225 nmol \* The yield will be lower for oligos longer than 50mer. Click here for yield table of long oligos. \* Click here for RNA Oligos scale of synthesis and yield. **NHS Ligand conjugation** requires a primary amino group. Gene Link offers a wide selection of amino modifications for 5', 3' and internal sites. Click here for a list of conjugation chemistry modifications. **Maleimide Ligand conjugation** requires a thiol group. Gene Link offers a wide selection of thiol modifications for 5', 3' and internal sites.

Click here for a list of conjugation chemistry modifications. **Click Chemistry Ligand conjugation** requires a corresponding Click modification; examples Alkyne:Azide, Azide:DBCO, BCN:Azide, BCN: TCO:Tetrazine. Gene Link offers a wide selection of click modifications for 5', 3' and internal sites. Click here for a list of click chemistry modifications.

Conventional and popular dyes that are derivatives of fluorescein (FAM, HEX and TET) and Cyanine dye derivatives (Cy3, Cy5, Cy5.5, Cy7 etc) are commonly used for fluorescently labeling oligos for use as molecular probes for real time PCR, FISH analysis and fragment analysis. For most purposes these provide a good range in wavelength and other optical properties and are available as amidites for direct coupling to oligos using automated chemistry. Other fluorescent dyes are available as N-hydroxysuccinimide (NHS) for conjugation using a primary amine group linked to the oligos. A new series of Atto dyes are now available that are designed for high sensitivity applications, including single-molecule detection.

ATTO 647N belongs to a new generation of fluorescent labels for the red spectral region. Characteristic features of the label are strong absorption, high fluorescence quantum yield, high thermal and photo-stability, and **exceptionally high stability towards atmospheric ozone**. Thus ATTO 647N is highly suitable for single-molecule detection applications and high-resolution microscopy such as SIM, STED etc. Additionally the dye highly qualifies to be applied in flow cytometry (FACS), fluorescence in-situ hybridization (FISH) and many more.

In common with most ATTO-labels, absorption and fluorescence are independent of pH, at least in the range of pH 2 to 11, used in typical applications. The dye is moderately hydrophilic. ATTO 647N is a cationic dye. After coupling to a substrate the dye carries a net electrical charge of +1. As supplied ATTO 647N consists of a mixture of two isomers with practically identical absorption and fluorescence properties. The fluorescence is excited most efficiently in the range 625 - 660 nm. A suitable excitation source is the 647 nm line of the Krypton-Ion laser or a diode-laser emitting at 650 nm.

ATTO Dyes are a series of fluorescent labels and dyes manufactured by ATTO-TEC GmbH in Siegen, Germany. The ATTO Dye series covers a spectral range from 390 nm in the UV to 740 nm in the near infrared allowing excitation with most commonly used light sources. The dyes typically are derivatives of coumarins, rhodamines, carbopyronins and oxazines. Compared with other labels especially for the red region of the spectrum, ATTO-labels show excellent photostability and brightness. Atto labels have rigid structures that do not show any cis-trans isomerization. Thus these labels display exceptional intensity with minimal spectral shift on conjugation. The molecules of most common dyes, e.g. cyanines, have a more or less flexible structure. Hence their solutions contain a mixture of several isomers with varying properties. Since the equilibrium between the isomers depends on temperature and other environmental factors, absorption and fluorescence of such dyes are ill-defined. ATTO-dyes have a molecular structure that ensures high rigidity of the chromophore. They do not form equilibria with various isomers, their optical properties are nearly independent of solvent and temperature. ATTO 647N fluoresces twice as strong as Cy5 in aqueous solution. In addition many common fluorescent labels especially cyanine dyes like Cy5 deteriorate even without any irradiation (in the dark), in particular when exposed to small concentrations of ozone present in the laboratory atmosphere. Under identical conditions of ozone exposure the new dyes ATTO 633, ATTO 647N and ATTO 655 last up to 100 times longer than cyanines like Cy5 and Alexa Fluor 647. This is very important in microarray applications, where the dye molecules are located at the surface and thus are in direct contact with the atmosphere.

#### Near Infrared Fluorophore Spectral Data & Quencher Selection Guide

Fluorophore Name

Absorbance Max, nm +/-10

Emission Max, nm +/-10

Extinction Coefficient\*

Color\*\*

Quencher

**Cy5 650 665 250,000**

**IRDye 650 NHS 650 665 230,000**

**AZ647 NHS 655 680 191,800**

**AZ680 NHS 678 701 185,000**

**Cy5.5 684 710 198,000**

**IRDye 700 NHS 684 710 288,000**

**AZdye700 NHS 696 719 192,000**

**Atto 700 NHS 700 716 120,000**

**Atto 725 NHS 728 751 120,000**

**Atto 740 NHS 743 763 120,000**

**Cy7 NHS 740 773 199,000**

**IRDye 750 NHS 756 776 260,000**

**cy7.5 NHS 788 808 223,000**

**IRDye 800 NHS 795 819 240,000**

\* Extinction coefficient at  $\lambda$  (max) in  $\text{cm}^{-1}\text{M}^{-1}$ . \*\* Typical emission color seen through the eyepiece of a conventional fluorescence microscope with appropriate filters. Near-IR region. Human vision is insensitive to light beyond ~650 nm; it is not possible to view near-IR fluorescent dyes.

**[Click here for a list of fluorophores.](#)**

**[Click here for list of quenchers.](#)**