



## Product Manual

### **Human beta actin RT-PCRmer™**

#### **Human beta actin RT-PCR primer sets**

Catalog No.: 40-1001-10, 40-101X-10

Store at -20°C

For research use only. Not for use in diagnostic procedures for clinical purposes.

## Material Supplied

### Human beta actin RT-PCRmer™

Human cytoplasmic beta actin RT-PCR primer sets

#### Storage Instructions:

1. Shipped lyophilized at room temperature.
2. Store at  $-20^{\circ}\text{C}$  upon receipt.
3. Store at  $-20^{\circ}\text{C}$  after reconstitution.

	Catalog No.	Product	Size
<input type="checkbox"/>	40-1001-10	Human beta actin A RT-PCRmer™ (F1/R1); Exon 3	10 nmols
<input type="checkbox"/>	40-1021-10	Human beta actin B RT-PCRmer™ (F4/R3B); Exon 2-5	10 nmols
<input type="checkbox"/>	40-1022-10	Human beta actin C RT-PCRmer™ (F6/R1); 5'UTR-Exon 3	10 nmols
<input type="checkbox"/>	40-1023-10	Human beta actin D RT-PCRmer™ (F2/R2); Exon 4-3' UTR	10 nmols
<input type="checkbox"/>	40-1024-10	Human beta actin F RT-PCRmer™ (F6/R2); 5' UTR- 3' UTR	10 nmols
<input type="checkbox"/>	40-1025-10	Human beta actin G RT-PCRmer™ (F4/R1); Exon 2-3	10 nmols
<input type="checkbox"/>	40-1026-10	Human beta actin TM RT-PCRmer™ for Taqman assay (F2/R3); Exon 4-5	10 nmols
<input type="checkbox"/>	40-1027-02	Human beta actin TaqMan Probe (F2/R3); Exon 5	2 nmols
<input type="checkbox"/>	40-1028-10	Human beta actin MB RT-PCRmer™ for Molecular Beacon assay (F2/R3B); Exon 4-5	10 nmols
<input type="checkbox"/>	40-1029-02	Human beta actin Molecular Beacon Probe (F2/R3B); Exon 5	2 nmols

Each tube supplied contains the lyophilized primer RT-PCRmer™ pair. Please refer to label on the specific tube. Each tube contains 10 nmols. The quantity supplied is sufficient for 400 regular 50  $\mu\text{l}$  PCR reactions.

\*The polymerase chain reaction (PCR) process is covered by patents owned by Hoffmann-La Roche. A license to perform is automatically granted by the use of authorized reagents.

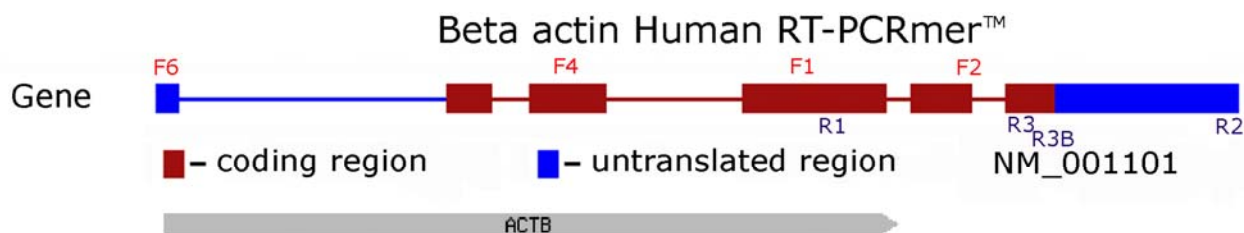
# Human beta actin RT-PCRmer™

Human cytoplasmic beta actin RT-PCR primer sets

## Description

RT-PCRmer™ are primer pairs for specific amplification of cDNA.  $\beta$ -actin is ubiquitously expressed and serves as a positive control for northern and other expression studies. These are generally used as controls for measuring cDNA synthesis efficiency by reverse transcription and as controls for mRNA (cDNA) quantitative expression studies. The RT-PCRmer™ are supplied as a lyophilized powder in aliquots of 10 nmols. The 10 nmols of primer when dissolved in 500  $\mu$ l sterile water or TE will give a solution of 20  $\mu$ Molar i.e. 20 pmols/ $\mu$ l. The quantity supplied is sufficient for at least 400 regular 25  $\mu$ l PCR reaction\* for ethidium bromide stained visualization. The amplified product may also be detected by hybridization using Gene Link OligoProber™ that are specific probes directed to the amplified fragment. These are available with either a free 5' OH for  $^{32}$ P labeling or 5' biotinylated probe for non-radioactive detection.

The product is supplied as a lyophilized powder, after reconstitution store at -20 °C. Oligo purity is greater than 98% as determined by denaturing polyacrylamide gel electrophoresis.



mRNA 1 1793

Human beta actin RT-PCRmer™ Specifications				
Catalog No.	Primer Set	Primer Position	cDNA Fragment Size	Genomic Fragment Size
40-1001-10	Human beta actin A (F1/R1)*	Exon 3	289 bp	289 bp
40-1021-10	Human beta actin B (F4/R3B)	Exon 2/ Exon 5	860 bp	1507 bp
40-1022-10	Human beta actin C (F6/R1)	5'UTR/ Exon 3	816 bp	2156 bp
40-1023-10	Human beta actin D (F2/R2)	Exon 4/ 3' UTR	759 bp	870 bp
40-1024-10	Human beta actin F (F6/R2)	5'UTR/ 3'UTR	1769 bp	3312 bp
40-1025-10	Human beta actin G (F4/R1)	Exon 2/ Exon 3	388 bp	940 bp
40-1026-10	Human beta actin TM (F2/R3) for Taqman assay	Exon 4/ Exon 5	130 bp	244 bp
40-1027-02	Human beta actin TaqMan Probe (F2/R3)	Exon 5		
40-1028-10	Human beta actin MB (F2/R3B) for Molecular Beacon assay	Exon 4/ Exon 5	167 bp	281 bp
40-1029-02	Human beta actin Molecular Beacon Probe (F2/R3B)	Exon 5		
Human Beta actin ref mRNA: NM_001101; Gene: NC_000007				
*All primers span introns except F1/R1 (Fragment A).				

## Procedure

### Genemer™ Reconstitution

**Stock Primer Mix:** Dissolve the supplied lyophilized RT-PCRmer™ in 100 µl sterile TE. The 10 nmols of primers when dissolved in 100 µl will give a solution of 100 µM i.e. 100 pmols/µl.

**Primer Mix:** Prepare a 10 pmols/µl Primer Mix solution by a ten fold dilution of the stock primer mix. Example: Add 180 µl sterile TE to a new tube, to this tube add 20 µl of primer stock solution. Label this tube as Primer Mix 10 pmols/µl.

### Recipe


TE Buffer pH 7.5 Composition
1 X TE Buffer pH 7.5
10 mM Tris-HCl pH 7.5
1 mM EDTA

### cDNA Amplification and Detection

Set up the following amplification files on a thermal cycler. Please refer to the instrument manufacturer's manual for setting up of the program.

Hot Start		
Step	Time & Temperature	Cycles
Initial Denaturation	95 °C for 5 minutes	1
Annealing	50 °C Hold Infinity	Hold
Comments: Add Taq premix while on hold.		

Amplification Profile		
Step	Temperature & Time	Cycles
Denaturation	94 °C for 30 seconds	30
Annealing	55 °C for 30 seconds	
Extension	72 °C for 60 seconds	
Fill up	72 °C for 7 minutes	1
Hold	4 °C hold for infinity	Hold

 Program thermal cycler instrument with an amplification profile prior to starting the amplification protocol. Consult appropriate instrument manufacturer's manual.

### PCR\*

#### 1. PCR Premix Preparation (PP). Label tube "PP"

PCR Premix Preparation (PP)		
Component	1 X 50 µl Rxn.	10 X 50 µl Rxns.
Sterile Water	32 µl	320 µl
10 X PCR Buffer	4.5 µl	45 µl
2.0 mM dNTP	5 µl	50 µl
10 pmol/µl Primer Mix	2.5 µl	25 µl
Template cDNA (~50 ng)	1-2 µl	Add cDNA to each tube
Total Volume	45 µl	
After adding template start hot start PCR File		

Dispense 44 µl of the above PCR premix to individual PCR tubes for each amplification reaction and then add the template DNA. Start "Hot Start" thermal cycler file. While holding at 50 °C add 5 µl of the Taq Enzyme Mix (EM). Start amplification file.

## 2. Taq Polymerase mix Preparation (EM). Label tube "EM"

Taq Enzyme Mix Preparation (EM)		
Component	1 X 50 µl Rxn.	10 X 50 µl Rxns.
Sterile Water	5 µl	50 µl
10 X PCR Buffer	0.5 µl	5 µl
Taq Polymerase	0.5 µl	5 µl
Add 5 µl to each reaction when holding after hot start		



Ethidium bromide is a carcinogen. Follow Health and Safety Procedures established by your institution. Follow proper Hazardous Material Disposal procedures established by your institution.

## D. Agarose Electrophoresis

Load 5 to 10 µl samples to 0.8% agarose gel. Run at 60 mAmps. Confirm correct amplification fragment size.

## Results and Interpretation

RT-PCR™ primer sets are specific for amplification of different size fragments of cDNA. Each RT-PCRmer™ primer pair spans varying number of intron segments and amplifies a specific fragment.

Human beta actin RT-PCRmer™ Specifications			
Primer Set	Primer Position	cDNA Fragment Size	Genomic Fragment Size
Human beta actin A (F1/R1)*	Exon 3	289 bp	289 bp
Human beta actin B (F4/R3B)	Exon 2/ Exon 5	860 bp	1507 bp
Human beta actin C (F6/R1)	5'UTR/ Exon 3	816 bp	2156 bp
Human beta actin D (F2/R2)	Exon 4/ 3' UTR	759 bp	870 bp
Human beta actin F (F6/R2)	5'UTR/ 3'UTR	1769 bp	3312 bp
Human beta actin G (F4/R1)	Exon 2/ Exon 3	388 bp	940 bp
Human beta actin TM (F2/R3) for Taqman assay	Exon 4/ Exon 5	130 bp	244 bp
Human beta actin TM Probe (F2/R3)	Exon 5		
Human beta actin MB (F2/R3B) for Molecular Beacon assay	Exon 4/ Exon 5	167 bp	281 bp
Human beta actin MB Probe (F2/R3B)	Exon 5		
Human Beta actin ref mRNA: NM_001101; Gene: NC_000007			
*All primers span introns except F1/R1 (Fragment A).			



Human pooled cDNA (10-0100-05; Omni-cDNA™ Human Pooled First Strand cDNA) 50 ng was used as the template in a 100 µl PCR reaction volume.

## Appendix

### PCR Components and Analysis

PCR buffer conditions vary and it is imperative to optimize buffer conditions for each amplification reaction. At Gene Link most amplification reactions have been optimized to work with the following standard buffer condition, unless otherwise indicated.

### dNTP Concentration

Standard dNTP concentration of 0.2 mM of each base is used. See section on PCR additives when dNTP concentration is changed.

### Buffer Condition

#### MgCl<sub>2</sub> Concentration

The concentration of Mg<sup>++</sup> will vary from 1-5 mM, depending upon primers and substrate. Since Mg<sup>2+</sup> ions form complexes with dNTPs, primers and DNA templates, the optimal concentration of MgCl<sub>2</sub> has to be selected for each experiment. Low Mg<sup>2+</sup> ions result in a low yield of PCR product, and high concentrations increase the yield of non-specific products and promote mis-incorporation. Lower Mg<sup>2+</sup> concentrations are desirable when fidelity of DNA synthesis is critical. The recommended range of MgCl<sub>2</sub> concentration is 1-4 mM, under the standard reaction conditions specified. At Gene Link, using the standard PCR buffer with KCl, a final dNTP concentration of 0.2 mM, a MgCl<sub>2</sub> concentration of 1.5 is used in most cases. If the DNA samples contain EDTA or other chelators, the MgCl<sub>2</sub> concentration in the reaction mixture should be raised proportionally. Given below is an MgCl<sub>2</sub> concentration calculation and addition table using a stock solution of 25 mM MgCl<sub>2</sub>.

MgCl <sub>2</sub> Concentration & Addition Table								
Final concentration of MgCl <sub>2</sub> in 50 µl reaction mix, (mM)	1.0	1.25	1.5	1.75	2.0	2.5	3.0	4.0
Volume of 25 mM MgCl <sub>2</sub> , µl	2	2.5	3	3.5	4	5	6	8

### Primer Concentration

The final concentration of primers in a PCR reaction is usually 0.5 to 1 µM (micromolar). This is equivalent to 0.5 to 1 pmol/µl. For a 100 µl reaction you would add 50 to 100 pmols. At Gene Link we use 0.5 pmol/µl in the final PCR.

### Genemer™ Reconstitution

**Stock Primer Mix:** Dissolve the supplied 10 nmols of lyophilized Genemer™ in 100 µl sterile TE. The 10 nmols of primers when dissolved in 100 µl will give a solution of 100 µM i.e. 100 pmols/µl.

**Primer Mix:** Prepare a 10 pmols/µl Primer Mix solution by a ten fold dilution of the stock primer mix.

Example: Add 180 µl sterile TE to a new tube, to this tube add 20 µl of primer stock solution. Label this tube as Primer Mix 10 pmols/µl.

### Amplification Thermal Cycling

**Hot Start:** It is essential to have a 'Hot Start' profile for amplification of any fragment from a complex template like human genomic DNA. Taq polymerase has low activity at room temperature and it is essential to minimize any mis-priming in the first cycle of amplification. A typical hot start profile is given below. Various enzyme preparations are available which are activated by heat in the first cycle. A simple hot start protocol is given below that can be used with regular Taq polymerase. See the section on PCR additives for amplification of products from high GC content templates.

### Recipe

Standard Gene Link PCR Buffer Composition	
10 X PCR buffer	1 X PCR buffer
100 mM Tris-HCl pH 8.3	10 mM
500 mM KCl	50 mM
15 mM MgCl <sub>2</sub>	1.5 mM
0.01% Gelatin	0.001%

### Recipe

2.0 mM dNTP Stock Solution Preparation*	
Component	Volume
100 mM dGTP	100 µl
100 mM dATP	100 µl
100 mM dTTP	100 µl
100 mM dCTP	100 µl
Water	4.6 ml
Total Volume	5 ml
*Aliquot and freeze	



Always use filter barrier pipette tips to prevent cross contamination

### Recipe

TE Buffer pH 7.5 Composition
1 X TE Buffer pH 7.5
10 mM Tris-HCl pH 7.5
1 mM EDTA



Program your thermal cycler instrument with an amplification profile prior to beginning the amplification protocol. Consult your appropriate instrument manufacturer's manual.

### Recipe

## Human beta actin RT-PCRmer™ Amplification of human beta actin cDNA specific fragments

For research use only. Not for use in diagnostic procedures for clinical purposes.

Hot Start		
Step	Time & Temperature	Cycles
Initial Denaturation	95 °C for 5 minutes	1
Annealing	60 °C Hold Infinity	Hold
Comments: Add Taq premix while on hold.		

### Amplification File

The initial denaturation step at 94 °C for 30 seconds is sufficient for all templates. The number of cycles is usually set to 30 and is sufficient to amplify 1-10 µg of product depending on the initial concentration of template. A higher number of cycles from 35-45 cycles may be used, but internal priming on the product and over amplification of unwanted bands often result from over-cycling. Generally, it is better to focus on optimizing reaction conditions than to go beyond 35 cycles.

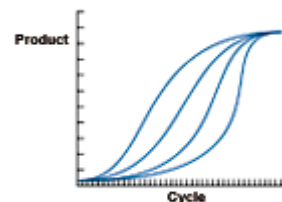
Typical Amplification File			
Step	Temperature	Time	Cycles
Denaturation	94 °C	30 sec.	30
Annealing	*	30 sec.	
Elongation	72 °C	30 sec.	
Fill in Extension	72 °C	7 minutes	1
Hold	4 °C r	Infinity	Hold
Based on the Tm of the primers. Usually varies from 50 °C to 65 °C			

PCR Premix Preparation (PP)		
Component	1 X 50 µl Rxn.	10 X 50 µl Rxns.
Sterile Water	32 µl	320 µl
10 X PCR Buffer	4.5 µl	45 µl
2.0 mM dNTP	5 µl	50 µl
10 pmol/µl Primer Mix	2.5 µl	25 µl
Taq Enzyme Mix (EM) See below for preparation	5 µl	50 µl
Template DNA (~500 ng)	1-2 µl	Add 1-2 µl DNA to each tube
Total Volume	50 µl	
Keep on ice during set up. After adding template start PCR File		

### Yield and Kinetics

The target will be amplified by up to 10<sup>6</sup> fold in a successful reaction, but the amplification will usually plateau at 1-10 µg. Thus, 1 pg of target sequence in the reaction is a good place to begin.

PCR reactions produce product in a nonlinear pattern. Amplification follows a typical exponential curve until some saturation point is reached. Generally products will not be further amplified once 1-5 µg has been generated. Saturation by one product of a reaction does not always prevent further amplification of other generally unwanted products. Over-cycling may decrease the quality of an otherwise good reaction. When first optimizing a reaction, it is advisable to take samples every 5 or 10 cycles to determine the number of cycles actually needed.



Typical PCR Premix (/50µl)	
Component	Volume
10 x PCR Buffer	5 µl
2.0 mM dNTP mix (each)	5 µl
Primer Mix (10 pmol/µl each) or 2.5µl of 10 pmol/µl of individual primer (final 25 pmol of each primer/50µl)	2.5 µl
H <sub>2</sub> O	37.5 µl
<b>Total Volume</b>	<b>50 µl</b>

### Recipe

PCR reaction (/50µl)	
Component	Volume
PCR premix	45 µl
100ng/µl diluted DNA	1 µl
Hot start and then add	
Taq premix	5 µl

### Recipe

Taq Premix (/50µl)	
Component	Volume
PCR Premix	6 µl
Taq polymerase (5 u/µl)	0.25µl
<b>Add 5 µl/50 µl rxn after initial denaturation</b>	
Use 2.5 units of Taq for 100 µl reactions. Taq is usually supplied at a concentration of 5 units/µl	

**i** • The PCR premix preparation protocol is written considering that more than one amplification reaction will be performed at the same time. If only one reaction is planned then there is no need to prepare the Taq Enzyme Mix (EM).

### Recipe

Gene Link PCR Buffer	
1 X PCR Buffer	
10 mM Tris-HCl pH 8.3	
50 mM KCl	
1.5 mM MgCl <sub>2</sub>	
0.001% Gelatin	



For research use only. Not for use in diagnostic procedures for clinical purposes.

### **Gel Electrophoresis of PCR Products**

Gel electrophoresis of PCR products is the standard method for analyzing reaction quality and yield. PCR products can range up to 10 kb in length, but the majority of amplifications are at 1 kb and below. Agarose electrophoresis is the classical method to analyze amplification products from 150 bp to greater than 10 kb. Polyacrylamide gel electrophoresis should be used for resolution of short fragments in the range of 100 bp to 500 bp when discrimination of as small as a 10 bp difference is required.

PAGE gels for PCR products formulated with the amount of cross-linker chosen to give pore sizes optimal for the size of DNA fragment desired. Gels are most often stained in ethidium bromide, even though the fluorescence of this stain is quenched by polyacrylamide, which decreases sensitivity 2-5 fold. This decrease in sensitivity generally does not present a problem, because most PCR reactions yield product levels in the microgram range, and ethidium will detect as little as 1/10 of this amount. Polyacrylamide gels can be stained by silver staining for more sensitive detection.

### Purification of PCR Product

Various purification methods are available for the purification of PCR products. The selection of a particular method over another is based on the downstream application and the initial robustness of the amplification. Usually no further purification is required for most cloning experiments if a single fragment is amplified, whereas for sequencing applications the amplified product should be purified from the primers and any other minor amplification products.

The preferred method of purification of an amplified fragment is the excision of the fragment band after agarose gel electrophoresis. This method yields the purification of a single fragment; as such care should be taken to excise a gel piece containing a single electrophoretically resolved fragment. The Omni-Clean™ Purification System available from Gene Link can be used for this purpose. Catalog No. 40-4110-10 for bead based system; 40-4120-10 for spin column based system and 40-4130-10 for DNA concentration. Please refer to product insert for detailed protocol or visit [www.genelink.com](http://www.genelink.com).

#### A. Purification of DNA from gel slices using glass beads. Provides purified single fragment.

[Omni-Clean™ Gel DNA Beads Purification System; Catalog No. 40-4110-10]

##### Protocol

1. By weight, determine the volume of the excised DNA fragment.
2. Add 3 volumes of NaI solution and heat to 55 °C. Visually determine the dissolution of gel pieces.
3. Add 1 µl of glass bead suspension per µg of DNA and vortex.
4. Centrifuge at 2K rpm for 20 seconds to pellet glass bead/DNA complex. Discard supernatant.
5. Re-suspend pellet in 400 µl Omni-Clean™ wash buffer. Centrifuge at 2K rpm for 20 seconds and discard wash buffer.
6. Pipet out any remaining buffer in the tube.
7. Add 25 µl water or TE; re-suspend pellet and centrifuge at 2K rpm for 20 seconds.
8. The supernatant contains the purified DNA. Using a pipet, collect the supernatant and transfer to a new appropriately labeled tube.

#### B. Purification of DNA from gel slices using spin column. Provides purified single fragment.

[Omni-Clean™ Gel DNA Spin Column Purification System; Catalog No. 40-4120-50]

##### Protocol

1. By weight, determine the volume of the excised DNA fragment.
2. Add 3 volumes of NaI solution and heat to 55 °C. Visually determine the dissolution of gel pieces.
3. Add the above solution to the spin column assembled on a collection tube.
4. Let the solution flow by gravity or centrifuge at 2K rpm for 20 seconds. Discard flow through collected in the collection tube.
5. Add 400 µl Omni-Clean™ wash buffer to the spin column. Centrifuge at 2K rpm for 2 minutes and discard wash buffer collected in the collection tube.
6. Replace the collection tube with a new appropriately labeled eppendorf tube.
7. Add 25 µl water or TE to the spin column. Let sit for 3 minutes.
8. Centrifuge at 2K rpm for 2 minutes.
9. The collection tube contains the purified DNA.

#### C. Purification of DNA from solution using glass beads. Provides removal of salts, primers and dNTP.

[Omni-Clean™ DNA Beads Concentration System; Catalog No. 40-4130-10]

##### Protocol

1. Determine volume of DNA solution and add 3 volumes of NaI solution.
2. Add 1 µl of glass bead suspension per µg of DNA.
3. Centrifuge at 2K rpm for 20 seconds to pellet glass bead/DNA complex. Discard supernatant.
4. Re-suspend pellet in 400 µl Omni-Clean™ wash buffer.
5. Centrifuge at 2K rpm for 20 seconds and discard wash buffer.
6. Pipet out any remaining buffer in the tube.
7. Add 25 µl water or TE; re-suspend pellet and centrifuge at 2K rpm for 20 seconds.
8. The supernatant contains the purified DNA. Using a pipet, collect the supernatant and transfer to a new appropriately labeled tube.

#### D. Purification of DNA from solution using spin column. Provides removal of salts, primers and dNTP.

[Omni-Clean™ DNA Spin Column Concentration System; Catalog No. 40-4140-10]

##### Protocol

1. Determine volume of DNA solution and add 3 volumes of NaI solution.
2. Add the above solution to the spin column assembled on a collection tube.
3. Let the solution flow by gravity or centrifuge at 2K rpm for 20 seconds. Discard flow through collected in the collection tube.
4. Add 400 µl Omni-Clean™ wash buffer to the spin column. Centrifuge at 2K rpm for 2 minutes and discard wash buffer collected in the collection tube.
5. Replace the collection tube with a new appropriately labeled eppendorf tube.
6. Add 25 µl water or TE to the spin column. Let sit for 3 minutes.
7. Centrifuge at 2K rpm for 2 minutes.
8. The collection tube contains the purified DNA.

**PCR Additives**

DNA polymerases need to elongate rapidly and accurately to function effectively *in vivo* and *in vitro*, yet certain DNA regions appear to interfere with their progress. One common problem is pause sites, at which DNA polymerase molecules cease elongation for varying lengths of time. Many strong DNA polymerase pauses are at the beginnings of regions of strong secondary structure such as template hairpins (1). Taq polymerase used in PCR suffers the same fate and GC-rich DNA sequences often require laborious work to optimize the amplification assay. The GC-rich sequences possess high thermal and structural stability, presumably because the high duplex melting temperature that permits stable secondary structures to form, thus preventing completion of a faithful replication (2).

Nucleotide analog 7-deaza dGTP is effective in reducing the secondary structure associated with GC rich region by reducing the duplex stability (4). Betaine, DMSO and formamide reduces the Tm and the complex secondary structure, thus the duplex stability (1-5). Tetramethyl ammonium chloride (TMAC) actually increases the specificity of hybridization and increases the Tm. The use of TMAC is recommended in PCR conditions using degenerate primers.

These PCR additives and enhancing agents have been used to increase the yield, specificity and consistency of PCR reactions. These additives may have beneficial effects on some amplification and it is impossible to predict which agents will be useful in a particular context and therefore they must be empirically tested for each combination of template and primers.

PCR Additives		
Additive	Purpose & Function	Concentration
7-deaza-2'-deoxyguanosine; 7-deaza dGTP	GC rich region amplification. Reduce the stability of duplex DNA	Totally replace dGTP with 7-deaza dGTP; or use 7-deaza dGTP: dGTP at 3:1
Betaine (N,N,N-trimethylglycine = [carboxymethyl]trimethylammonium)	Reduces Tm facilitating GC rich region amplification. Reduces duplex stability	Use 3.5M to 0.1M betaine. Be sure to use Betaine or Betaine (mono)hydrate and <b>not</b> Betaine HCl.
BSA (bovine serum albumin)	BSA has proven particularly useful when attempting to amplify ancient DNA or templates, which contain PCR inhibitors such as melanin.	BSA concentration of 0.01 µg/µl to 0.1 µg/ µl can be used.
DMSO (dimethyl sulfoxide)	DMSO is thought to reduce secondary structure and is particularly useful for GC rich templates.	DMSO at 2-10% may be necessary for amplification of some templates, however 10% DMSO can reduce Taq polymerase activity by up to 50% so it should not be used routinely.
Formamide	Reduces secondary structure and is particularly useful for GC rich templates.	Formamide is generally used at 1-5%. Do not exceed 10%.
Non-ionic detergents e.g. Triton X-100, Tween 20 or Nonidet P-40 (NP-40)	Non-ionic detergents stabilise Taq polymerase and may also suppress the formation of secondary structure.	0.1-1% Triton X-100, Tween 20 or NP-40 may increase yield but may also increase non-specific amplification. As little as 0.01% SDS contamination of the template DNA (left-over from the extraction procedure) can inhibit PCR by reducing Taq polymerase activity to as low as 10%, however, inclusion of 0.5% Tween-20 or -40 will effectively neutralize this effect.
TMAC (tetramethylammonium chloride)	TMAC is used to reduce potential DNA-RNA mismatch and improve the stringency of hybridization reactions. It increases Tm and minimizes mis-pairing.	TMAC is generally used at a final concentration of 15-100 mM to eliminate non-specific priming.

**References**

1. Kovarova, M; and Draber, P; (2000) New Specificity and yield enhancer for polymerase chain reactions (2000) Nucl. Acids. Res. 28: e70.
2. Henke, W., Herdel, K., Jung, K., Schnorr, D. and Stefan A. Loening, S. (1997) Betaine improves the PCR amplification of GC-rich DNA sequences. Nucl. Acids Res. 25: 3957-3958.
3. Daniel S. Mytelka, D.S., and Chamberlin, M.J.,(1996) Analysis and suppression of DNA polymerasepauses associated with a trinucleotide consensus. Nuc. Acids Res.,. 24:2774–278.
4. Keith, J. M., Cochran, D.A.E., Lala, G.H., Adams, P., Bryant, D.and Mitchelson, K.R. (2004) Unlocking hidden genomic sequence. Nucl. Acids Res. 32: e35.
5. Owczarzy, R., Dunietz, I., Behlke, M.A., Klotz, I.M. and Joseph A. Walder. (2003) Thermodynamic treatment of oligonucleotide duplex–simplex equilibria. PNAS, 100:14840-14845.

## Ordering Information

**Human beta actin RT-PCRmer™** Primer pair for specific amplification of cDNA. Special optimized conditions may be required for certain amplifications

Product	Size	Catalog No.	Price, \$
Human beta actin A RT-PCRmer™ (F1/R1); Exon 3	10 nmols	40-1001-10	100.00
Human beta actin B RT-PCRmer™ (F4/R3B); Exon 2-5	10 nmols	40-1021-10	100.00
Human beta actin C RT-PCRmer™ (F6/R1); 5' UTR-Exon 3	10 nmols	40-1022-10	100.00
Human beta actin D RT-PCRmer™ (F2/R2); Exon 4-3' UTR	10 nmols	40-1023-10	100.00
Human beta actin F RT-PCRmer™ (F6/R2); 5' UTR- 3' UTR	10 nmols	40-1024-10	100.00
Human beta actin G RT-PCRmer™ (F4/R1); Exon 2-3	10 nmols	40-1025-10	100.00
Human beta actin TM RT-PCRmer™ for Taqman assay (F2/R3); Exon 4-5	10 nmols	40-1026-10	100.00
Human beta actin TaqMan Probe (F2/R3); Exon 5	2 nmols	40-1027-02	100.00
Human beta actin MB RT-PCRmer™ for Molecular Beacon assay (F2/R3B); Exon 4-5	10 nmols	40-1028-10	100.00
Human beta actin Molecular Beacon Probe (F2/R3B); Exon 5	2 nmols	40-1029-02	100.00

\*Please visit [www.genelink.com](http://www.genelink.com) for other RT-PCRmer™ not listed here

**Mouse beta actin RT-PCRmer™** Primer pair for specific amplification of cDNA. Special optimized conditions may be required for certain amplifications

Product	Size	Catalog No.	Price, \$
Mouse beta actin A RT-PCRmer™ (F1/R1); Exon 2-3	10 nmols	40-1003-10	100.00
Mouse beta actin B RT-PCRmer™ (F2/R2); Exon 6-7	10 nmols	40-1014-10	100.00
Mouse beta actin C RT-PCRmer™ (F3/R3); Exon 2-7	10 nmols	40-1015-10	100.00
Mouse beta actin D RT-PCRmer™ (F4/R4); Exon 2-9	10 nmols	40-1016-10	100.00

\*Please visit [www.genelink.com](http://www.genelink.com) for other RT-PCRmer™ not listed here

**GAPDH RT-PCRmer™** Primer pair for specific amplification of cDNA. Special optimized conditions may be required for certain amplifications

Product	Size	Catalog No.	Price, \$
GAPDH A RT-PCRmer™ (F1/R1); Exon 2-3	10 nmols	40-1005-10	100.00
GAPDH B RT-PCRmer™ (F2/R2); Exon 6-7	10 nmols	40-1006-10	100.00
GAPDH C RT-PCRmer™ (F1/R2); Exon 2-7	10 nmols	40-1007-10	100.00
GAPDH D RT-PCRmer™ (F1/R3); Exon 2-9	10 nmols	40-1008-10	100.00

\*Please visit [www.genelink.com](http://www.genelink.com) for other RT-PCRmer™ not listed here

**RT-PCRmer™** Primer pair for specific amplification of cDNA. Special optimized conditions may be required for certain amplifications

Product	Size	Catalog No.	Price, \$
human beta actin RT-PCRmer;	10 nmols	40-1001-10	100.00
rat beta actin RT-PCRmer;	10 nmols	40-1002-10	100.00
mouse beta actin RT-PCRmer;	10 nmols	40-1003-10	100.00
beta2 microglobulin RT-PCRmer;	10 nmols	40-1004-10	100.00
Beta actin control PCR mix (human & rat)	200 ul	40-1002-00	110.00

\*Please visit [www.genelink.com](http://www.genelink.com) for other RT-PCRmer™ not listed here

**Genemer™** Primer pair for gene or mutation specific amplification. Special optimized conditions may be required for certain amplification

Product	Size	Catalog No.	Price, \$
Fragile X (spanning CGG triple repeat region)	10 nmols	40-2004-10	100.00
Huntington Disease (spanning CAG triple repeat region)	10 nmols	40-2025-10	100.00
Myotonic Dystrophy (spanning CTG triple repeat region)	10 nmols	40-2026-10	100.00
Friedreich's Ataxia (spanning GAA triple repeat region)	10 nmols	40-2027-10	100.00
Factor V	10 nmols	40-2035-10	100.00
Factor VIII (Hemophilia) Genemer™ Pack	10 nmols	40-2036-10	750.00
STS (Steroid Sulfatase)	10 nmols	40-2023-10	100.00
HGH (Human Growth Hormone)	10 nmols	40-2024-10	100.00
Sickle Cell	10 nmols	40-2001-10	100.00
RhD (Rh D gene exon 10 specific)	10 nmols	40-2002-10	100.00
Rh EeCc (Rh Ee and Cc exon 7 specific)	10 nmols	40-2003-10	100.00
Gaucher (various mutations)	10 nmols	40-2047-XX	100.00
Cystic Fibrosis (various mutations)	10 nmols	40-2029-XX	100.00
SRY (sex determining region on Y)	10 nmols	40-2020-10	100.00
X aliphoid repeat	10 nmols	40-2021-10	100.00
Y aliphoid repeat	10 nmols	40-2022-10	100.00

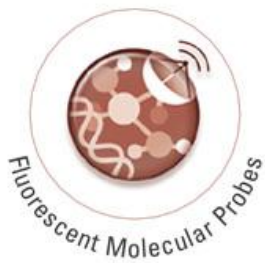
\*Please visit [www.genelink.com](http://www.genelink.com) for other Genemer™ not listed here

\*Please visit [www.genelink.com](http://www.genelink.com) for other GeneProber™ not listed here

\*\*The polymerase chain reaction (PCR) process is covered by patents owned by Hoffmann-La Roche. A license to perform is automatically granted by the use of authorized reagents.

Prices subject to change without notice

All Gene Link products are for research use only.



## Product Manual

Custom Oligo Synthesis, antisense oligos, RNA oligos, chimeric oligos,  
Fluorescent dye labeled oligos, Molecular Beacons, TaqMan Probes  
siRNA, Aptamers

## Control Fluorescent Molecular Probes

For research use only. Not for use in diagnostic procedures for clinical purposes.

### Applications

Real Time Quantitative PCR Analysis (QPCR) Probes  
Fluorescent Genotyping  
siRNA Gene Knockout Validation  
Allelic Discrimination  
Antisense Targeting  
SNP Detection  
Aptamers Detection Probes



---

# Endogenous Control Fluorescent Molecular Probes

---

## IMPORTANT NOTE

1. Consult product specification sheet and material supplied for specifications of product received.
2. This product guide is not specific to any particular endogenous control fluorescent probe.
3. This product guide should be used in conjunction with the particular instrument manual and specifications and is not intended to replace those specifications.

### Storage Instructions:

1. Shipped lyophilized at room temperature.
  2. Store at  $-20^{\circ}\text{C}$  upon receipt.
  3. Store at  $-20^{\circ}\text{C}$  after reconstitution.
-

# Endogenous Control Fluorescent Molecular Probes

## Reconstitution, Use & Stability of Fluorescent Probes

All Gene Link custom oligo products including, molecular probes, RNA and siRNA includes a datasheet that contains the exact nmols,  $\mu\text{g}$ , or  $A_{260}$  units (OD Units) and other physical data. This data is important for reconstituting the product. All fluorescent probes are shipped in amber tubes to prevent exposure to light and minimize photo-bleaching. Gene Link guarantees the stability of oligos for 1 year and fluorescent molecular probes for 6 months if reconstituted and stored appropriately as detailed below.

In our experience unmodified oligos are stable for numerous years if reconstituted and stored properly. Avoid multiple freeze thaws; do not exceed 6-10 freeze thaw cycles. If the same oligo is intended to be used repeatedly then it is prudent to make a numerous aliquots of the stock solution and frozen.

### Reconstitution & Storage

Gene Link fluorescent probes are supplied lyophilized in amber tubes to protect from light and to reduce photo bleaching. These are stable at room temperature for an extended period of time but should preferably be frozen upon receipt. TE buffer is recommended for dissolving the probes and oligonucleotides; EDTA inhibits the activity of the nucleases.

Preferred TE Buffer Reconstitution & Storage pH for Fluorescent Probes	
6-FAM, HEX, TET, ROX, and TAMRA	TE Buffer pH 7.5 or 8.0
Cy3, Cy3.5, Cy5, and Cy5.5	TE Buffer pH 7.0 or 7.5
Alexa dyes	TE Buffer pH 7.5 or 8.0
Cy dyes rapidly degrade in acidic pH	

Further dilution can be made in TE buffer. After reconstitution store the stock solution at  $-80^{\circ}\text{C}$  or  $-20^{\circ}\text{C}$ . Fluorescently labeled oligos should be stored protected from light.

### Preparation of Probe Stock Solution of 20 pmols/ $\mu\text{l}$ [20 $\mu\text{M}$ ]

Gene Link provides the exact amount of nmols of each probe supplied on the tube and on the Product Specifications Sheet included with the product.

**Example:** 2 nmols lyophilized product.

Dissolve the 2 nmol probe in 100  $\mu\text{l}$  of TE pH7.5 (10 mM Tris pH7.5, 1 mM EDTA) to get 20 pmols/ $\mu\text{l}$  stock solution [20  $\mu\text{M}$ ].

### Working Probe Stock Solution 2 pmols/ $\mu\text{l}$ [2 $\mu\text{M}$ ]

Dilute 10 fold to prepare a 2 pmols/ $\mu\text{l}$  [2  $\mu\text{M}$ ]

### Preparation of Primer Mix Stock Solution of 30 pmols/ $\mu\text{l}$ [30 $\mu\text{M}$ ]

Gene Link provides the exact amount of nmols of each probe supplied on the tube and on the Product Specifications Sheet included with the product. Most Gene Link Genemer™ primer mix are supplied as 10 nmols or 3 nmols lyophilized.

**Example:** 10 nmols lyophilized product.

Dissolve the 10 nmols of primer mix in 334  $\mu\text{l}$  of TE pH7.5 (10 mM Tris pH7.5, 1 mM EDTA) to get 30 pmols/ $\mu\text{l}$  stock solution [30  $\mu\text{M}$ ].

**Example: 3 nmols lyophilized product.**

Dissolve the 3 nmols of primer mix in 100  $\mu\text{l}$  of TE pH7.5 (10 mM Tris pH7.5, 1 mM EDTA) to get 30 pmols/ $\mu\text{l}$  stock solution [30  $\mu\text{M}$ ].

**Working Probe Stock Solution 3 pmols/ $\mu\text{l}$  [3  $\mu\text{M}$ ]**

Dilute 10 fold to prepare a3 pmols/ $\mu\text{l}$  [3  $\mu\text{M}$ ].

Working Stock solution in TE pH 7.5	
Primer	3 $\mu\text{Molar}$ [3 pmol/ $\mu\text{L}$ ]
Probe	2 $\mu\text{Molar}$ [2 pmol/ $\mu\text{L}$ ]

**Storage**

For optimal long-term storage, it is recommended that the oligonucleotides should be stored dry at  $-20^{\circ}\text{C}$  in the dark. If numerous experiments are planned using the same oligonucleotide, prepare aliquots, dry them and store the aliquots at  $-20^{\circ}\text{C}$ .

**Stability**

Gene Link guarantees the stability of oligos for 1 year and fluorescent molecular probes for 6 months if reconstituted and stored appropriately as recommended by Gene Link. The stability can be increased several fold by instituting proper handling conditions, avoiding exposure to light and multiple freeze thaws.



## Typical TaqMan Reaction Conditions

Component	Stock Solution	Final Concentration	per 25 $\mu$ L rxn	5x 25 $\mu$ L reaction mix
Water	Water		10 $\mu$ L	50 $\mu$ L
10X PCR buffer	10X	1X	2.5 $\mu$ L	12.5 $\mu$ L
dNTP	2 mM	200 $\mu$ M	2.5 $\mu$ L	12.5 $\mu$ L
MgCl <sub>2</sub>	25 mM	3 mM	3 $\mu$ L	15 $\mu$ L
Primer Mix	3 $\mu$ M	300 nM (0.3 pmol/ $\mu$ l)	3 $\mu$ L	15 $\mu$ L
Probe	2 $\mu$ M	200 nM (0.2 pmol/ $\mu$ l)	3 $\mu$ L	15 $\mu$ L
Template	~10ng/ $\mu$ L		1 $\mu$ L	
Taq polymerase	5u/ $\mu$ L	0.025 unit/ $\mu$ L	0.5 $\mu$ L	
Total Volume			25 $\mu$ L	

## QPCR Reaction

Dispense 25  $\mu$ L of above QPCR reaction mix to each tube then add 1  $\mu$ L template and start cycling.

## Typical TaqMan Cycling Conditions

	GL TaqMan PCR cycling	Time	Temperature	Cycles
Stage 1	GL Initial denaturation	2 min	95 °C	1
Stage 2	Denature	15 sec	95 °C	40
	Anneal/Extend-OPTICS ON	1 min	60 °C	

## Instrument Run & Results

Consult instrument manufacturer protocol and manual

## Typical Molecular Beacon Reaction Conditions

Component	Stock Solution	Final Concentration	per 25 $\mu$ L rxn	5x 25 $\mu$ L reaction mix
Water	Water		10 $\mu$ L	50 $\mu$ L
10X PCR buffer	10X	1X	2.5 $\mu$ L	12.5 $\mu$ L
dNTP	2 mM	200 $\mu$ M	2.5 $\mu$ L	12.5 $\mu$ L
MgCl <sub>2</sub>	25 mM	3 mM	3 $\mu$ L	15 $\mu$ L
Primer Mix	3 $\mu$ M	300 nM (0.3 pmol/ $\mu$ l)	3 $\mu$ L	15 $\mu$ L
Probe	2 $\mu$ M	200 nM (0.2 pmol/ $\mu$ l)	3 $\mu$ L	15 $\mu$ L
Template	~10ng/ $\mu$ L		1 $\mu$ L	
Taq polymerase	5u/ $\mu$ L	0.025 unit/ $\mu$ L	0.5 $\mu$ L	
Total Volume			25 $\mu$ L	

### QPCR Reaction

Dispense 25  $\mu$ L of above QPCR reaction mix to each tube then add 1  $\mu$ L template and start cycling.

Stage	Molecular Beacon QPCR cycling	Time	Temperature	Cycles
Stage 1	Initial denaturation	2 min	95 °C	1
Stage 2	Denature	15 sec	95 °C	40
	Anneal-OPTICS ON	30 sec	60 °C	
	Extend-OPTICS OFF	30 sec	72 °C	

### Instrument Run & Results

Consult instrument manufacturer protocol and manual

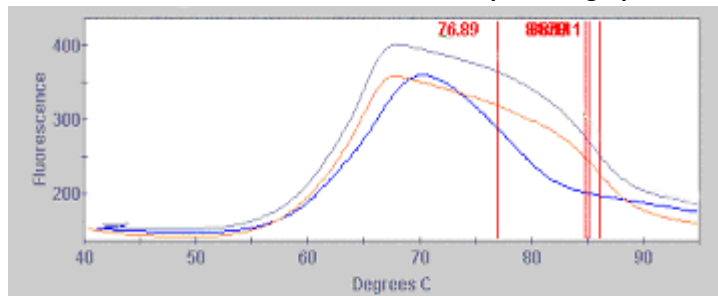
## Gene Link Molecular Beacon Melt Curve Protocol

1. Prepare Molecular Beacon stock solution at 100 pmols/ $\mu$ l [ 100  $\mu$ M (micromolar) ] in 1 X PCR Buffer. Gene Link provides the exact amount of nmoles of each oligo supplied on the tube and on the Oligo Report. Multiply the 'nmol' amount by 10 to arrive at the volume of solvent to be added.
2. Prepare Molecular Beacon working solution at 5 pmols/ $\mu$ l [ 5  $\mu$ M (micromolar) ] in 1 X PCR Buffer.
3. Set up two 25  $\mu$ l reactions, one with probe alone, one with target + probe as follows.

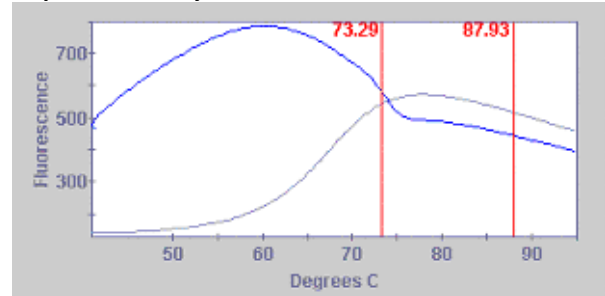
Molecular Beacon Probe Alone	Molecular Beacon Probe plus Target
2.5 $\mu$ l 10X PCR buffer	2.5 $\mu$ l 10x PCR buffer
3 $\mu$ l 25 mM MgCl <sub>2</sub>	3 $\mu$ l 25 mM MgCl <sub>2</sub>
1 $\mu$ l 5 pmol/ $\mu$ l probe [0.2 pmol/ $\mu$ l final or 200 nM]	1 $\mu$ l 5 pmol/ $\mu$ l probe [0.2 pmol/ $\mu$ l final or 200 nM]
	3 $\mu$ l 5 pmol/ $\mu$ l target [0.6 pmol/ $\mu$ l final or 600 nM]
18.5 $\mu$ l H <sub>2</sub> O	15.5 $\mu$ l H <sub>2</sub> O

The protocol for Molecular Beacon Melt Curve ramps from 40 to 95 degrees C at 0.2 degrees/second

### Screen capture of graphs from a Cepheid SmartCycler



Multiple Molecular Beacon Probe Alone Melt Curve



Molecular Beacon Probe plus Target and Probe Alone Melt Curve

#### Notes:

- MgCl<sub>2</sub> needs to be higher for MB reactions than for regular PCR as it helps to stabilize the stem structure of the probe during the high ramp rate. Final concentration of MgCl<sub>2</sub> should be between 2.5 and 4 mM. Here we use 3 mM final. This is the same range of concentration used in an actual amplification reaction.
- Final concentration of probe should be 200-600 nM. Here we use 200 nM. This is also the same concentration range used for the real time reaction.
- For a melt curve it is important to saturate the probe with target. Use 2-3 X the *Molar* amount of target. Here we use 3X target for a final concentration of 600 nM. For real time monitoring, 500 ng genomic DNA, diluted 10X to various concentrations can be used as a starting point.

#### QPCR

Once you have your melt curve you want to select an annealing temperature for your real time PCR where the probe alone is completely closed (shows no fluorescence), and the probe+target is completely open (shows maximal fluorescence). This temperature should be about 5-8 degrees below the T<sub>m</sub> of the probe/target hybrid (red vertical line on melt curve of probe+target). It is important to test your primers at the annealing T to ensure that you will have strong, clean amplification at this temperature.

Signal-to-noise (S:N) ratios is calculated by dividing the fluorescence signal of a 25-mer in the presence of a two to five-fold excess of an exactly complementary target sequence by the fluorescence intensity of the probe alone.

## Fluorophore Spectral Data

### Fluorophore Absorbance and Emission Data

Dye	Color	Absorbance max (nm)	Emission max (nm)	Extinction Coefficient
6-FAM (Fluorescein)	Green	494	525	74850
TET	Orange	521	536	85553
HEX	Pink	535	556	95698
Cy 5	Violet	646	667	250000
Cy 5.5	Blue	683	707	190000
Cy 3	Red	552	570	150000
Cy 3.5	Purple	588	604	150000
Cy 7	Near IR	743	767	200000
Tamra	Rose	565	580	87000
ROX	Purple	587	607	105000
JOE	Mustard	528	554	105000
Alexa Dye Series	Varies	Varies	Varies	Varies

### List of Other Molecular Probes Fluorescent Dyes

Dye	Color	Absorbance max (nm)	Emission max (nm)	Extinction Coefficient
Cascade Blue	Blue	396	410	29,000
Marina Blue	Blue	362	459	19,000
Oregon Green 500	Green	499	519	78,000
Oregon Green 514	Green	506	526	85,000
Oregon Green 488	Green	495	521	76,000
Oregon Green 488-X	Green	494	517	84,000
Pacific Blue	Blue	416	451	36,000
Rhodamine Green	Green	504	532	78,000
Rhodol Green	Green	496	523	63,000
Rhodamine Green-X	Green	503	528	74,000
Rhodamine Red-X	Red	560	580	129,000
Texas Red-X	Red	583	603	136,000

### Applied Biosystems Proprietary Dyes & Possible Substitutions

Dye	Absorbance max (nm)	Emission max (nm)
VIC	538	554
HEX	535	556
NED	546	575
Cy3	550	570
PET	558	595
Cy3.5	588	604
ROX	575	602
Texas Red	583	603
LIZ	630	652
Cy5	646	667

### Alexa Fluor® Dyes

Dye	Color	Absorbance max (nm)	Emission max (nm)	Extinction Coefficient
Alexa Fluor 350	Blue	346	442	19,000
Alexa Fluor 405	Green	401	421	34,000
Alexa Fluor 430	Green	433	541	16,000
Alexa Fluor 488	Green	495	519	71,000
Alexa Fluor 532	Yellow	532	553	81,000
Alexa Fluor 546	Red	556	573	104,000
Alexa Fluor 555	Red	555	565	150,000
Alexa Fluor 568	Red	578	603	91,000
Alexa Fluor 594	Red	590	617	73,000
Alexa Fluor 633	Violet	632	647*	100,000
Alexa Fluor 647	Violet	650	665*	239,000
Alexa Fluor 660	Purple	663	690*	123,000
Alexa Fluor 680	Blue	679	702*	184,000
Alexa Fluor 700	Near IR	702	723*	192,000
Alexa Fluor 750	Near IR	749	775*	240,000

Spectral characteristics of the Alexa Fluor dyes. Extinction coefficient at  $\lambda_{max}$  in  $cm^{-1}m^{-1}$ . \*Human vision is insensitive to light beyond  $\sim 650nm$ , and therefore it is not possible to view the far -red- fluorescent dyes by looking through the eyepiece of a conventional fluorescent microscope. Alexa Fluor® Dyes is sold under license from Invitrogen Corporation. These may only be used for R&D and may not be used for clinical or diagnostic use.

---

\*Disclaimer of License Statement for Molecular Beacons Products -

\*PHRI Molecular Beacon License Agreement -"This product is sold under license from the Public Health Research Institute. It may be used under PHRI Patent Rights only for the purchaser's research and development activities". \*\*Black Hole Quencher License Agreement

"Black Hole Quencher", "BHQ-1", "BHQ-2" and "BHQ-3" are registered trademarks of Biosearch Technologies, Inc., Novato, CA. The BHQ technology is licensed and sold under agreement with Biosearch and these products are sold exclusively for R&D use by the purchaser. They may not be used for clinical or diagnostic purposes and they may not be resold, distributed or re-packaged.

\*Alexa Fluor® Dyes are sold under license from Invitrogen Corporation. These may only be used for R&D and may not be used for clinical or diagnostic use.

---

# Tools: An Array of Genetic Tools

Tools application from Gene Link for iPhone/iPod/iPad

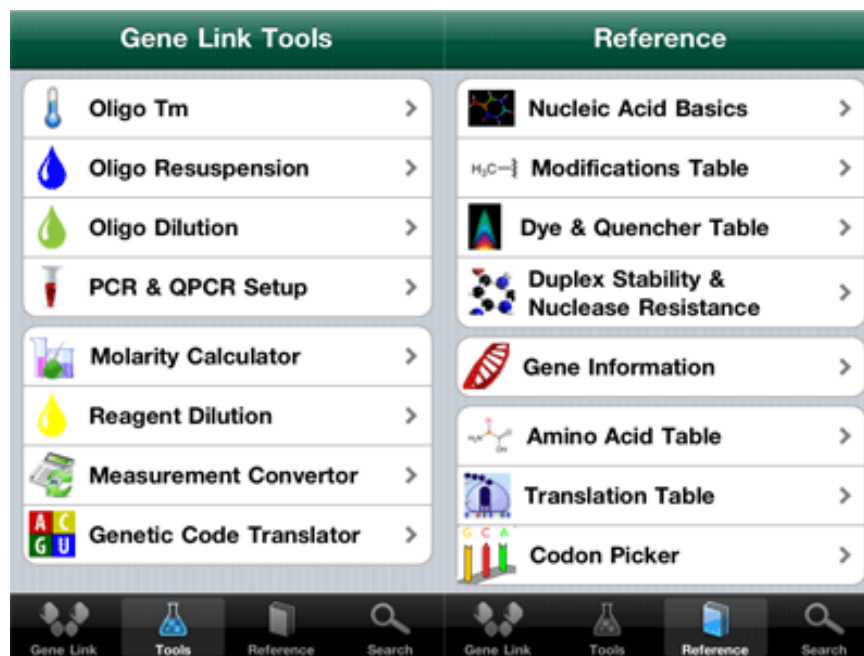


View In iTunes

+ This app is designed for both iPhone and iPad  
Free

Category: Education

Updated: Feb 20, 2012



The Gene Link Tools app also has advanced modules for setup of Polymerase Chain Reaction (PCR) and Quantitative Real Time PCR (Q-PCR).

The main focus of this app is to have a handy source of calculation modules and quick reference sections for designing and executing experiments involving PCR and Q-PCR.

## Tools Modules

1. Oligo Tm: A robust oligo melting temperature calculation module using three methods; it also calculates other physical attributes.
2. Oligo Resuspension
5. Oligo Dilution
6. PCR & QPCR: Convenient calculator for multiple reaction setup for PCR, TaqMan QPCR and Molecular Beacon QPCR setup. Includes stock solution information and cycling profiles
7. Molarity Calculator
8. Reagent Dilution
9. Measurement Convertor: A convenient selection of calculators to convert length, area, mass, temperature and volume units.
10. Genetic Code Translator: Enter DNA sequence to see coding pattern.

## Reference Modules

A selection of topics, relevant to life scientists for quick access to basic information. This section includes the following sections and sub sections.

1. Nucleic Acid Basics
2. Modifications Table: A list of common modifications with molecular structure and basic properties.
3. Dye & Quencher Table: A convenient list of fluorophores and quencher matching the emission max.
4. Duplex Stability & Nuclease Resistance
5. Gene Information: Simply enter the accession number and retrieve detailed gene information from NCBI database,
6. Amino Acid Table: Molecular structure and detailed physical properties of all amino acids.
7. Translation Table: Genetic code for all amino acids.
8. Codon Picker: Select codon sequence and see the corresponding amino acid and detailed information.