



Product Manual

Human beta actin RT-PCRmer™

Human beta actin RT-PCR primer sets

Catalog No.: 40-1001-10, 40-101X-10

Store at -20°C

For research use only. Not for use in diagnostic procedures for clinical purposes.

Material Supplied

Human beta actin RT-PCRmer™

Human cytoplasmic beta actin RT-PCR primer sets

Storage Instructions:

1. Shipped lyophilized at room temperature.
2. Store at -20°C upon receipt.
3. Store at -20°C after reconstitution.

| | Catalog No. | Product | Size |
|--------------------------|-------------|--|----------|
| <input type="checkbox"/> | 40-1001-10 | Human beta actin A RT-PCRmer™ (F1/R1); Exon 3 | 10 nmols |
| <input type="checkbox"/> | 40-1021-10 | Human beta actin B RT-PCRmer™ (F4/R3B); Exon 2-5 | 10 nmols |
| <input type="checkbox"/> | 40-1022-10 | Human beta actin C RT-PCRmer™ (F6/R1); 5'UTR-Exon 3 | 10 nmols |
| <input type="checkbox"/> | 40-1023-10 | Human beta actin D RT-PCRmer™ (F2/R2); Exon 4-3' UTR | 10 nmols |
| <input type="checkbox"/> | 40-1024-10 | Human beta actin F RT-PCRmer™ (F6/R2); 5' UTR- 3' UTR | 10 nmols |
| <input type="checkbox"/> | 40-1025-10 | Human beta actin G RT-PCRmer™ (F4/R1); Exon 2-3 | 10 nmols |
| <input type="checkbox"/> | 40-1026-10 | Human beta actin TM RT-PCRmer™ for Taqman assay (F2/R3); Exon 4-5 | 10 nmols |
| <input type="checkbox"/> | 40-1027-02 | Human beta actin TaqMan Probe (F2/R3); Exon 5 | 2 nmols |
| <input type="checkbox"/> | 40-1028-10 | Human beta actin MB RT-PCRmer™ for Molecular Beacon assay (F2/R3B); Exon 4-5 | 10 nmols |
| <input type="checkbox"/> | 40-1029-02 | Human beta actin Molecular Beacon Probe (F2/R3B); Exon 5 | 2 nmols |

Each tube supplied contains the lyophilized primer RT-PCRmer™ pair. Please refer to label on the specific tube. Each tube contains 10 nmols. The quantity supplied is sufficient for 400 regular 50 μl PCR reactions.

*The polymerase chain reaction (PCR) process is covered by patents owned by Hoffmann-La Roche. A license to perform is automatically granted by the use of authorized reagents.

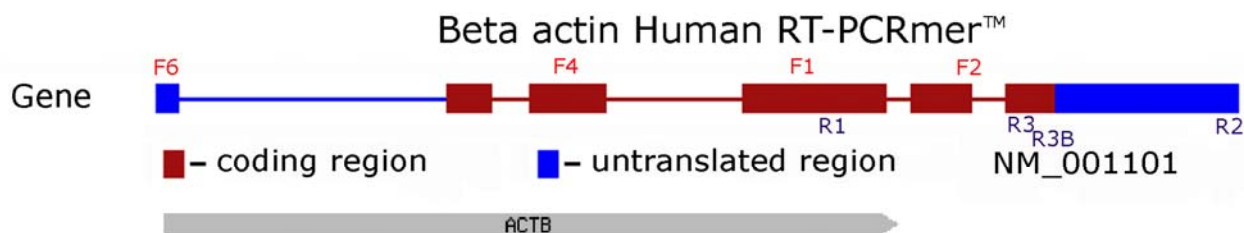
Human beta actin RT-PCRmer™

Human cytoplasmic beta actin RT-PCR primer sets

Description

RT-PCRmer™ are primer pairs for specific amplification of cDNA. β -actin is ubiquitously expressed and serves as a positive control for northern and other expression studies. These are generally used as controls for measuring cDNA synthesis efficiency by reverse transcription and as controls for mRNA (cDNA) quantitative expression studies. The RT-PCRmer™ are supplied as a lyophilized powder in aliquots of 10 nmols. The 10 nmols of primer when dissolved in 500 μ l sterile water or TE will give a solution of 20 μ Molar i.e. 20 pmols/ μ l. The quantity supplied is sufficient for at least 400 regular 25 μ l PCR reaction* for ethidium bromide stained visualization. The amplified product may also be detected by hybridization using Gene Link OligoProber™ that are specific probes directed to the amplified fragment. These are available with either a free 5' OH for 32 P labeling or 5' biotinylated probe for non-radioactive detection.

The product is supplied as a lyophilized powder, after reconstitution store at -20 °C. Oligo purity is greater than 98% as determined by denaturing polyacrylamide gel electrophoresis.



mRNA 1 1793

| Human beta actin RT-PCRmer™ Specifications | | | | |
|---|---|-----------------|--------------------|-----------------------|
| Catalog No. | Primer Set | Primer Position | cDNA Fragment Size | Genomic Fragment Size |
| 40-1001-10 | Human beta actin A (F1/R1)* | Exon 3 | 289 bp | 289 bp |
| 40-1021-10 | Human beta actin B (F4/R3B) | Exon 2/ Exon 5 | 860 bp | 1507 bp |
| 40-1022-10 | Human beta actin C (F6/R1) | 5'UTR/ Exon 3 | 816 bp | 2156 bp |
| 40-1023-10 | Human beta actin D (F2/R2) | Exon 4/ 3' UTR | 759 bp | 870 bp |
| 40-1024-10 | Human beta actin F (F6/R2) | 5'UTR/ 3'UTR | 1769 bp | 3312 bp |
| 40-1025-10 | Human beta actin G (F4/R1) | Exon 2/ Exon 3 | 388 bp | 940 bp |
| 40-1026-10 | Human beta actin TM (F2/R3) for Taqman assay | Exon 4/ Exon 5 | 130 bp | 244 bp |
| 40-1027-02 | Human beta actin TaqMan Probe (F2/R3) | Exon 5 | | |
| 40-1028-10 | Human beta actin MB (F2/R3B) for Molecular Beacon assay | Exon 4/ Exon 5 | 167 bp | 281 bp |
| 40-1029-02 | Human beta actin Molecular Beacon Probe (F2/R3B) | Exon 5 | | |
| Human Beta actin ref mRNA: NM_001101; Gene: NC_000007 | | | | |
| *All primers span introns except F1/R1 (Fragment A). | | | | |

Procedure

Genemer™ Reconstitution

Stock Primer Mix: Dissolve the supplied lyophilized RT-PCRmer™ in 100 µl sterile TE. The 10 nmols of primers when dissolved in 100 µl will give a solution of 100 µM i.e. 100 pmols/µl.

Primer Mix: Prepare a 10 pmols/µl Primer Mix solution by a ten fold dilution of the stock primer mix. Example: Add 180 µl sterile TE to a new tube, to this tube add 20 µl of primer stock solution. Label this tube as Primer Mix 10 pmols/µl.

Recipe


| TE Buffer pH 7.5 Composition |
|------------------------------|
| 1 X TE Buffer pH 7.5 |
| 10 mM Tris-HCl pH 7.5 |
| 1 mM EDTA |

cDNA Amplification and Detection

Set up the following amplification files on a thermal cycler. Please refer to the instrument manufacturer's manual for setting up of the program.

| Hot Start | | |
|---|---------------------|--------|
| Step | Time & Temperature | Cycles |
| Initial Denaturation | 95 °C for 5 minutes | 1 |
| Annealing | 50 °C Hold Infinity | Hold |
| Comments: Add Taq premix while on hold. | | |

| Amplification Profile | | |
|-----------------------|------------------------|--------|
| Step | Temperature & Time | Cycles |
| Denaturation | 94 °C for 30 seconds | 30 |
| Annealing | 55 °C for 30 seconds | |
| Extension | 72 °C for 60 seconds | |
| Fill up | 72 °C for 7 minutes | 1 |
| Hold | 4 °C hold for infinity | Hold |

 Program thermal cycler instrument with an amplification profile prior to starting the amplification protocol. Consult appropriate instrument manufacturer's manual.

PCR*

1. PCR Premix Preparation (PP). Label tube "PP"

| PCR Premix Preparation (PP) | | |
|--|----------------|-----------------------|
| Component | 1 X 50 µl Rxn. | 10 X 50 µl Rxns. |
| Sterile Water | 32 µl | 320 µl |
| 10 X PCR Buffer | 4.5 µl | 45 µl |
| 2.0 mM dNTP | 5 µl | 50 µl |
| 10 pmol/µl Primer Mix | 2.5 µl | 25 µl |
| Template cDNA (~50 ng) | 1-2 µl | Add cDNA to each tube |
| Total Volume | 45 µl | |
| After adding template start hot start PCR File | | |

Dispense 44 µl of the above PCR premix to individual PCR tubes for each amplification reaction and then add the template DNA. Start "Hot Start" thermal cycler file. While holding at 50 °C add 5 µl of the Taq Enzyme Mix (EM). Start amplification file.

2. Taq Polymerase mix Preparation (EM). Label tube “EM”

| Taq Enzyme Mix Preparation (EM) | | |
|--|----------------|------------------|
| Component | 1 X 50 µl Rxn. | 10 X 50 µl Rxns. |
| Sterile Water | 5 µl | 50 µl |
| 10 X PCR Buffer | 0.5 µl | 5 µl |
| Taq Polymerase | 0.5 µl | 5 µl |
| Add 5 µl to each reaction when holding after hot start | | |



Ethidium bromide is a carcinogen. Follow Health and Safety Procedures established by your institution. Follow proper Hazardous Material Disposal procedures established by your institution.

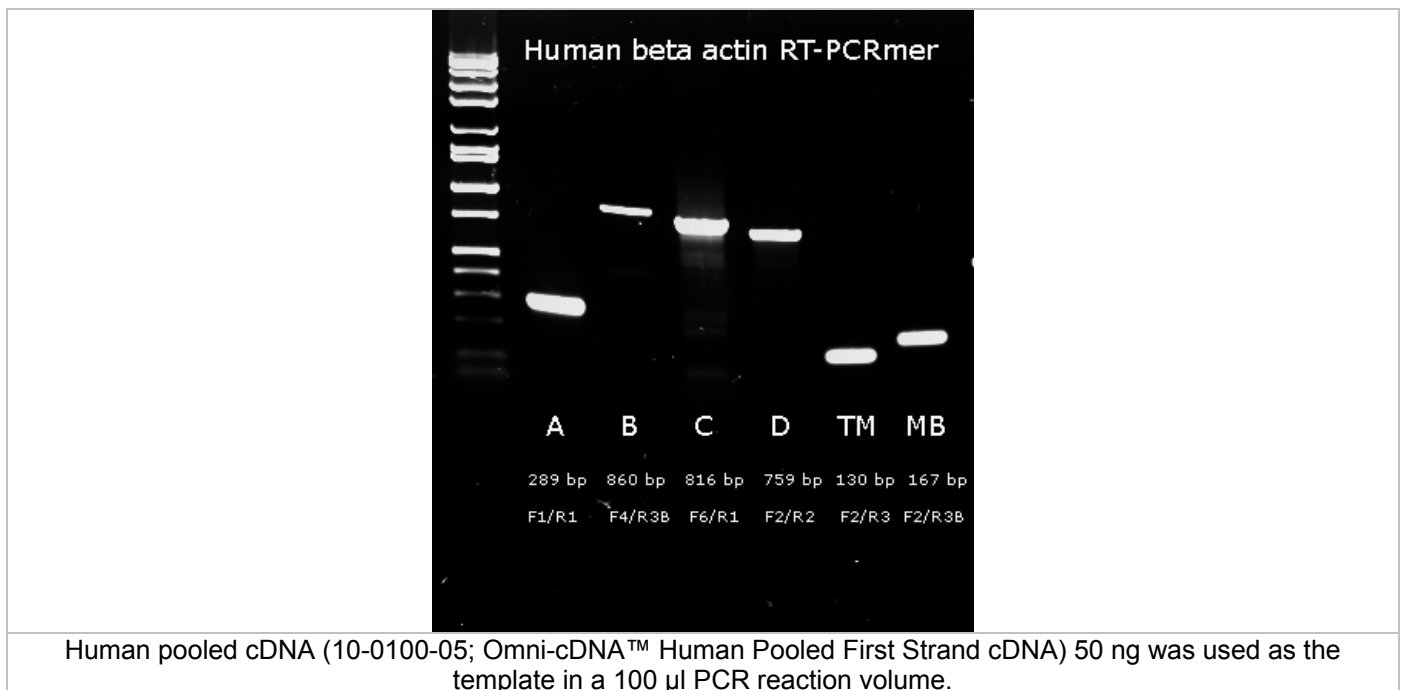
D. Agarose Electrophoresis

Load 5 to 10 µl samples to 0.8% agarose gel. Run at 60 mAmps. Confirm correct amplification fragment size.

Results and Interpretation

RT-PCR™ primer sets are specific for amplification of different size fragments of cDNA. Each RT-PCRmer™ primer pair spans varying number of intron segments and amplifies a specific fragment.

| Human beta actin RT-PCRmer™ Specifications | | | |
|---|-----------------|--------------------|-----------------------|
| Primer Set | Primer Position | cDNA Fragment Size | Genomic Fragment Size |
| Human beta actin A (F1/R1)* | Exon 3 | 289 bp | 289 bp |
| Human beta actin B (F4/R3B) | Exon 2/ Exon 5 | 860 bp | 1507 bp |
| Human beta actin C (F6/R1) | 5'UTR/ Exon 3 | 816 bp | 2156 bp |
| Human beta actin D (F2/R2) | Exon 4/ 3' UTR | 759 bp | 870 bp |
| Human beta actin F (F6/R2) | 5'UTR/ 3'UTR | 1769 bp | 3312 bp |
| Human beta actin G (F4/R1) | Exon 2/ Exon 3 | 388 bp | 940 bp |
| Human beta actin TM (F2/R3) for Taqman assay | Exon 4/ Exon 5 | 130 bp | 244 bp |
| Human beta actin TM Probe (F2/R3) | Exon 5 | | |
| Human beta actin MB (F2/R3B) for Molecular Beacon assay | Exon 4/ Exon 5 | 167 bp | 281 bp |
| Human beta actin MB Probe (F2/R3B) | Exon 5 | | |
| Human Beta actin ref mRNA: NM_001101; Gene: NC_000007 | | | |
| *All primers span introns except F1/R1 (Fragment A). | | | |



Appendix

PCR Components and Analysis

PCR buffer conditions vary and it is imperative to optimize buffer conditions for each amplification reaction. At Gene Link most amplification reactions have been optimized to work with the following standard buffer condition, unless otherwise indicated.

dNTP Concentration

Standard dNTP concentration of 0.2 mM of each base is used. See section on PCR additives when dNTP concentration is changed.

Buffer Condition

MgCl₂ Concentration

The concentration of Mg⁺⁺ will vary from 1-5 mM, depending upon primers and substrate. Since Mg²⁺ ions form complexes with dNTPs, primers and DNA templates, the optimal concentration of MgCl₂ has to be selected for each experiment. Low Mg²⁺ ions result in a low yield of PCR product, and high concentrations increase the yield of non-specific products and promote mis-incorporation. Lower Mg²⁺ concentrations are desirable when fidelity of DNA synthesis is critical. The recommended range of MgCl₂ concentration is 1-4 mM, under the standard reaction conditions specified. At Gene Link, using the standard PCR buffer with KCl, a final dNTP concentration of 0.2 mM, a MgCl₂ concentration of 1.5 is used in most cases. If the DNA samples contain EDTA or other chelators, the MgCl₂ concentration in the reaction mixture should be raised proportionally. Given below is an MgCl₂ concentration calculation and addition table using a stock solution of 25 mM MgCl₂.

| MgCl ₂ Concentration & Addition Table | | | | | | | | |
|--|-----|------|-----|------|-----|-----|-----|-----|
| Final concentration of MgCl ₂ in 50 µl reaction mix, (mM) | 1.0 | 1.25 | 1.5 | 1.75 | 2.0 | 2.5 | 3.0 | 4.0 |
| Volume of 25 mM MgCl ₂ , µl | 2 | 2.5 | 3 | 3.5 | 4 | 5 | 6 | 8 |

Primer Concentration

The final concentration of primers in a PCR reaction is usually 0.5 to 1 µM (micromolar). This is equivalent to 0.5 to 1 pmol/µl. For a 100 µl reaction you would add 50 to 100 pmols. At Gene Link we use 0.5 pmol/µl in the final PCR.

Genemer™ Reconstitution

Stock Primer Mix: Dissolve the supplied 10 nmols of lyophilized Genemer™ in 100 µl sterile TE. The 10 nmols of primers when dissolved in 100 µl will give a solution of 100 µM i.e. 100 pmols/µl.

Primer Mix: Prepare a 10 pmols/µl Primer Mix solution by a ten fold dilution of the stock primer mix.

Example: Add 180 µl sterile TE to a new tube, to this tube add 20 µl of primer stock solution. Label this tube as Primer Mix 10 pmols/µl.

Amplification Thermal Cycling

Hot Start: It is essential to have a 'Hot Start' profile for amplification of any fragment from a complex template like human genomic DNA. Taq polymerase has low activity at room temperature and it is essential to minimize any mis-priming in the first cycle of amplification. A typical hot start profile is given below. Various enzyme preparations are available which are activated by heat in the first cycle. A simple hot start protocol is given below that can be used with regular Taq polymerase. See the section on PCR additives for amplification of products from high GC content templates.

Recipe

| Standard Gene Link PCR Buffer Composition | |
|---|----------------|
| 10 X PCR buffer | 1 X PCR buffer |
| 100 mM Tris-HCl pH 8.3 | 10 mM |
| 500 mM KCl | 50 mM |
| 15 mM MgCl ₂ | 1.5 mM |
| 0.01% Gelatin | 0.001% |

Recipe

| 2.0 mM dNTP Stock Solution Preparation* | |
|---|--------|
| Component | Volume |
| 100 mM dGTP | 100 µl |
| 100 mM dATP | 100 µl |
| 100 mM dTTP | 100 µl |
| 100 mM dCTP | 100 µl |
| Water | 4.6 ml |
| Total Volume | 5 ml |
| *Aliquot and freeze | |



Always use filter barrier pipette tips to prevent cross contamination

Recipe

| TE Buffer pH 7.5 Composition | |
|------------------------------|--|
| 1 X TE Buffer pH 7.5 | |
| 10 mM Tris-HCl pH 7.5 | |
| 1 mM EDTA | |



Program your thermal cycler instrument with an amplification profile prior to beginning the amplification protocol. Consult your appropriate instrument manufacturer's manual.

Recipe

Human beta actin RT-PCRmer™ Amplification of human beta actin cDNA specific fragments

For research use only. Not for use in diagnostic procedures for clinical purposes.

| Hot Start | | |
|---|---------------------|--------|
| Step | Time & Temperature | Cycles |
| Initial Denaturation | 95 °C for 5 minutes | 1 |
| Annealing | 60 °C Hold Infinity | Hold |
| Comments: Add Taq premix while on hold. | | |

Amplification File

The initial denaturation step at 94 °C for 30 seconds is sufficient for all templates. The number of cycles is usually set to 30 and is sufficient to amplify 1-10 µg of product depending on the initial concentration of template. A higher number of cycles from 35-45 cycles may be used, but internal priming on the product and over amplification of unwanted bands often result from over-cycling. Generally, it is better to focus on optimizing reaction conditions than to go beyond 35 cycles.

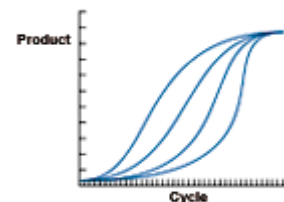
| Typical Amplification File | | | |
|--|-------------|-----------|--------|
| Step | Temperature | Time | Cycles |
| Denaturation | 94 °C | 30 sec. | 30 |
| Annealing | * | 30 sec. | |
| Elongation | 72 °C | 30 sec. | |
| Fill in Extension | 72 °C | 7 minutes | 1 |
| Hold | 4 °C r | Infinity | Hold |
| Based on the Tm of the primers. Usually varies from 50 °C to 65 °C | | | |

| PCR Premix Preparation (PP) | | |
|---|----------------|-----------------------------|
| Component | 1 X 50 µl Rxn. | 10 X 50 µl Rxns. |
| Sterile Water | 32 µl | 320 µl |
| 10 X PCR Buffer | 4.5 µl | 45 µl |
| 2.0 mM dNTP | 5 µl | 50 µl |
| 10 pmol/µl Primer Mix | 2.5 µl | 25 µl |
| Taq Enzyme Mix (EM) See below for preparation | 5 µl | 50 µl |
| Template DNA (~500 ng) | 1-2 µl | Add 1-2 µl DNA to each tube |
| Total Volume | 50 µl | |
| Keep on ice during set up. After adding template start PCR File | | |

Yield and Kinetics

The target will be amplified by up to 10⁶ fold in a successful reaction, but the amplification will usually plateau at 1-10 µg. Thus, 1 pg of target sequence in the reaction is a good place to begin.

PCR reactions produce product in a nonlinear pattern. Amplification follows a typical exponential curve until some saturation point is reached. Generally products will not be further amplified once 1-5 µg has been generated. Saturation by one product of a reaction does not always prevent further amplification of other generally unwanted products. Over-cycling may decrease the quality of an otherwise good reaction. When first optimizing a reaction, it is advisable to take samples every 5 or 10 cycles to determine the number of cycles actually needed.



| Typical PCR Premix (/50µl) | |
|---|--------------|
| Component | Volume |
| 10 x PCR Buffer | 5 µl |
| 2.0 mM dNTP mix (each) | 5 µl |
| Primer Mix (10 pmol/µl each) or 2.5µl of 10 pmol/µl of individual primer (final 25 pmol of each primer/50µl) | 2.5 µl |
| H ₂ O | 37.5 µl |
| Total Volume | 50 µl |

Recipe

| PCR reaction (/50µl) | |
|------------------------|--------|
| Component | Volume |
| PCR premix | 45 µl |
| 100ng/µl diluted DNA | 1 µl |
| Hot start and then add | |
| Taq premix | 5 µl |

Recipe

| Taq Premix (/50µl) | |
|--|--------|
| Component | Volume |
| PCR Premix | 6 µl |
| Taq polymerase (5 u/µl) | 0.25µl |
| Add 5 µl/50 µl rxn after initial denaturation | |
| Use 2.5 units of Taq for 100 µl reactions. Taq is usually supplied at a concentration of 5 units/µl | |

i • The PCR premix preparation protocol is written considering that more than one amplification reaction will be performed at the same time. If only one reaction is planned then there is no need to prepare the Taq Enzyme Mix (EM).

Recipe

| Gene Link PCR Buffer | |
|--------------------------|--|
| 1 X PCR Buffer | |
| 10 mM Tris-HCl pH 8.3 | |
| 50 mM KCl | |
| 1.5 mM MgCl ₂ | |
| 0.001% Gelatin | |

For research use only. Not for use in diagnostic procedures for clinical purposes.

Gel Electrophoresis of PCR Products

Gel electrophoresis of PCR products is the standard method for analyzing reaction quality and yield. PCR products can range up to 10 kb in length, but the majority of amplifications are at 1 kb and below. Agarose electrophoresis is the classical method to analyze amplification products from 150 bp to greater than 10 kb. Polyacrylamide gel electrophoresis should be used for resolution of short fragments in the range of 100 bp to 500 bp when discrimination of as small as a 10 bp difference is required.

PAGE gels for PCR products formulated with the amount of cross-linker chosen to give pore sizes optimal for the size of DNA fragment desired. Gels are most often stained in ethidium bromide, even though the fluorescence of this stain is quenched by polyacrylamide, which decreases sensitivity 2-5 fold. This decrease in sensitivity generally does not present a problem, because most PCR reactions yield product levels in the microgram range, and ethidium will detect as little as 1/10 of this amount. Polyacrylamide gels can be stained by silver staining for more sensitive detection.

Purification of PCR Product

Various purification methods are available for the purification of PCR products. The selection of a particular method over another is based on the downstream application and the initial robustness of the amplification. Usually no further purification is required for most cloning experiments if a single fragment is amplified, whereas for sequencing applications the amplified product should be purified from the primers and any other minor amplification products.

The preferred method of purification of an amplified fragment is the excision of the fragment band after agarose gel electrophoresis. This method yields the purification of a single fragment; as such care should be taken to excise a gel piece containing a single electrophoretically resolved fragment. The Omni-Clean™ Purification System available from Gene Link can be used for this purpose. Catalog No. 40-4110-10 for bead based system; 40-4120-10 for spin column based system and 40-4130-10 for DNA concentration. Please refer to product insert for detailed protocol or visit www.genelink.com.

A. Purification of DNA from gel slices using glass beads. Provides purified single fragment.

[Omni-Clean™ Gel DNA Beads Purification System; Catalog No. 40-4110-10]

Protocol

1. By weight, determine the volume of the excised DNA fragment.
2. Add 3 volumes of NaI solution and heat to 55 °C. Visually determine the dissolution of gel pieces.
3. Add 1 µl of glass bead suspension per µg of DNA and vortex.
4. Centrifuge at 2K rpm for 20 seconds to pellet glass bead/DNA complex. Discard supernatant.
5. Re-suspend pellet in 400 µl Omni-Clean™ wash buffer. Centrifuge at 2K rpm for 20 seconds and discard wash buffer.
6. Pipet out any remaining buffer in the tube.
7. Add 25 µl water or TE; re-suspend pellet and centrifuge at 2K rpm for 20 seconds.
8. The supernatant contains the purified DNA. Using a pipet, collect the supernatant and transfer to a new appropriately labeled tube.

B. Purification of DNA from gel slices using spin column. Provides purified single fragment.

[Omni-Clean™ Gel DNA Spin Column Purification System; Catalog No. 40-4120-50]

Protocol

1. By weight, determine the volume of the excised DNA fragment.
2. Add 3 volumes of NaI solution and heat to 55 °C. Visually determine the dissolution of gel pieces.
3. Add the above solution to the spin column assembled on a collection tube.
4. Let the solution flow by gravity or centrifuge at 2K rpm for 20 seconds. Discard flow through collected in the collection tube.
5. Add 400 µl Omni-Clean™ wash buffer to the spin column. Centrifuge at 2K rpm for 2 minutes and discard wash buffer collected in the collection tube.
6. Replace the collection tube with a new appropriately labeled eppendorf tube.
7. Add 25 µl water or TE to the spin column. Let sit for 3 minutes.
8. Centrifuge at 2K rpm for 2 minutes.
9. The collection tube contains the purified DNA.

C. Purification of DNA from solution using glass beads. Provides removal of salts, primers and dNTP.

[Omni-Clean™ DNA Beads Concentration System; Catalog No. 40-4130-10]

Protocol

1. Determine volume of DNA solution and add 3 volumes of NaI solution.
2. Add 1 µl of glass bead suspension per µg of DNA.
3. Centrifuge at 2K rpm for 20 seconds to pellet glass bead/DNA complex. Discard supernatant.
4. Re-suspend pellet in 400 µl Omni-Clean™ wash buffer.
5. Centrifuge at 2K rpm for 20 seconds and discard wash buffer.
6. Pipet out any remaining buffer in the tube.
7. Add 25 µl water or TE; re-suspend pellet and centrifuge at 2K rpm for 20 seconds.
8. The supernatant contains the purified DNA. Using a pipet, collect the supernatant and transfer to a new appropriately labeled tube.

D. Purification of DNA from solution using spin column. Provides removal of salts, primers and dNTP.

[Omni-Clean™ DNA Spin Column Concentration System; Catalog No. 40-4140-10]

Protocol

1. Determine volume of DNA solution and add 3 volumes of NaI solution.
2. Add the above solution to the spin column assembled on a collection tube.
3. Let the solution flow by gravity or centrifuge at 2K rpm for 20 seconds. Discard flow through collected in the collection tube.
4. Add 400 µl Omni-Clean™ wash buffer to the spin column. Centrifuge at 2K rpm for 2 minutes and discard wash buffer collected in the collection tube.
5. Replace the collection tube with a new appropriately labeled eppendorf tube.
6. Add 25 µl water or TE to the spin column. Let sit for 3 minutes.
7. Centrifuge at 2K rpm for 2 minutes.
8. The collection tube contains the purified DNA.

For research use only. Not for use in diagnostic procedures for clinical purposes.

PCR Additives

DNA polymerases need to elongate rapidly and accurately to function effectively *in vivo* and *in vitro*, yet certain DNA regions appear to interfere with their progress. One common problem is pause sites, at which DNA polymerase molecules cease elongation for varying lengths of time. Many strong DNA polymerase pauses are at the beginnings of regions of strong secondary structure such as template hairpins (1). Taq polymerase used in PCR suffers the same fate and GC-rich DNA sequences often require laborious work to optimize the amplification assay. The GC-rich sequences possess high thermal and structural stability, presumably because the high duplex melting temperature that permits stable secondary structures to form, thus preventing completion of a faithful replication (2).

Nucleotide analog 7-deaza dGTP is effective in reducing the secondary structure associated with GC rich region by reducing the duplex stability (4). Betaine, DMSO and formamide reduces the Tm and the complex secondary structure, thus the duplex stability (1-5). Tetramethyl ammonium chloride (TMAC) actually increases the specificity of hybridization and increases the Tm. The use of TMAC is recommended in PCR conditions using degenerate primers.

These PCR additives and enhancing agents have been used to increase the yield, specificity and consistency of PCR reactions. These additives may have beneficial effects on some amplification and it is impossible to predict which agents will be useful in a particular context and therefore they must be empirically tested for each combination of template and primers.

| PCR Additives | | |
|--|---|--|
| Additive | Purpose & Function | Concentration |
| 7-deaza-2'-deoxyguanosine; 7-deaza dGTP | GC rich region amplification. Reduce the stability of duplex DNA | Totally replace dGTP with 7-deaza dGTP; or use 7-deaza dGTP: dGTP at 3:1 |
| Betaine (N,N,N-trimethylglycine = [carboxymethyl]trimethylammonium) | Reduces Tm facilitating GC rich region amplification. Reduces duplex stability | Use 3.5M to 0.1M betaine. Be sure to use Betaine or Betaine (mono)hydrate and not Betaine HCl. |
| BSA (bovine serum albumin) | BSA has proven particularly useful when attempting to amplify ancient DNA or templates, which contain PCR inhibitors such as melanin. | BSA concentration of 0.01 µg/µl to 0.1 µg/ µl can be used. |
| DMSO (dimethyl sulfoxide) | DMSO is thought to reduce secondary structure and is particularly useful for GC rich templates. | DMSO at 2-10% may be necessary for amplification of some templates, however 10% DMSO can reduce Taq polymerase activity by up to 50% so it should not be used routinely. |
| Formamide | Reduces secondary structure and is particularly useful for GC rich templates. | Formamide is generally used at 1-5%. Do not exceed 10%. |
| Non-ionic detergents e.g. Triton X-100, Tween 20 or Nonidet P-40 (NP-40) | Non-ionic detergents stabilise Taq polymerase and may also suppress the formation of secondary structure. | 0.1-1% Triton X-100, Tween 20 or NP-40 may increase yield but may also increase non-specific amplification. As little as 0.01% SDS contamination of the template DNA (left-over from the extraction procedure) can inhibit PCR by reducing Taq polymerase activity to as low as 10%, however, inclusion of 0.5% Tween-20 or -40 will effectively neutralize this effect. |
| TMAC (tetramethylammonium chloride) | TMAC is used to reduce potential DNA-RNA mismatch and improve the stringency of hybridization reactions. It increases Tm and minimizes mis-pairing. | TMAC is generally used at a final concentration of 15-100 mM to eliminate non-specific priming. |

References

1. Kovarova, M; and Draber, P; (2000) New Specificity and yield enhancer for polymerase chain reactions (2000) Nucl. Acids. Res. 28: e70.
2. Henke, W., Herdel, K., Jung, K., Schnorr, D. and Stefan A. Loening, S. (1997) Betaine improves the PCR amplification of GC-rich DNA sequences. Nucl. Acids Res. 25: 3957-3958.
3. Daniel S. Mytelka, D.S., and Chamberlin, M.J.,(1996) Analysis and suppression of DNA polymerasepauses associated with a trinucleotide consensus. Nuc. Acids Res.,. 24:2774–278.
4. Keith, J. M., Cochran, D.A.E., Lala, G.H., Adams, P., Bryant, D.and Mitchelson, K.R. (2004) Unlocking hidden genomic sequence. Nucl. Acids Res. 32: e35.
5. Owczarzy, R., Dunietz, I., Behlke, M.A., Klotz, I.M. and Joseph A. Walder. (2003) Thermodynamic treatment of oligonucleotide duplex–simplex equilibria. PNAS, 100:14840-14845.



Ordering Information

Human beta actin RT-PCRmer™ Primer pair for specific amplification of cDNA. Special optimized conditions may be required for certain amplifications

| Product | Size | Catalog No. | Price, \$ |
|--|----------|-------------|-----------|
| Human beta actin A RT-PCRmer™ (F1/R1); Exon 3 | 10 nmols | 40-1001-10 | 100.00 |
| Human beta actin B RT-PCRmer™ (F4/R3B); Exon 2-5 | 10 nmols | 40-1021-10 | 100.00 |
| Human beta actin C RT-PCRmer™ (F6/R1); 5' UTR-Exon 3 | 10 nmols | 40-1022-10 | 100.00 |
| Human beta actin D RT-PCRmer™ (F2/R2); Exon 4-3' UTR | 10 nmols | 40-1023-10 | 100.00 |
| Human beta actin F RT-PCRmer™ (F6/R2); 5' UTR- 3' UTR | 10 nmols | 40-1024-10 | 100.00 |
| Human beta actin G RT-PCRmer™ (F4/R1); Exon 2-3 | 10 nmols | 40-1025-10 | 100.00 |
| Human beta actin TM RT-PCRmer™ for Taqman assay (F2/R3); Exon 4-5 | 10 nmols | 40-1026-10 | 100.00 |
| Human beta actin TaqMan Probe (F2/R3); Exon 5 | 2 nmols | 40-1027-02 | 100.00 |
| Human beta actin MB RT-PCRmer™ for Molecular Beacon assay (F2/R3B); Exon 4-5 | 10 nmols | 40-1028-10 | 100.00 |
| Human beta actin Molecular Beacon Probe (F2/R3B); Exon 5 | 2 nmols | 40-1029-02 | 100.00 |

*Please visit www.genelink.com for other RT-PCRmer™ not listed here

Mouse beta actin RT-PCRmer™ Primer pair for specific amplification of cDNA. Special optimized conditions may be required for certain amplifications

| Product | Size | Catalog No. | Price, \$ |
|---|----------|-------------|-----------|
| Mouse beta actin A RT-PCRmer™ (F1/R1); Exon 2-3 | 10 nmols | 40-1003-10 | 100.00 |
| Mouse beta actin B RT-PCRmer™ (F2/R2); Exon 6-7 | 10 nmols | 40-1014-10 | 100.00 |
| Mouse beta actin C RT-PCRmer™ (F3/R3); Exon 2-7 | 10 nmols | 40-1015-10 | 100.00 |
| Mouse beta actin D RT-PCRmer™ (F4/R4); Exon 2-9 | 10 nmols | 40-1016-10 | 100.00 |

*Please visit www.genelink.com for other RT-PCRmer™ not listed here

GAPDH RT-PCRmer™ Primer pair for specific amplification of cDNA. Special optimized conditions may be required for certain amplifications

| Product | Size | Catalog No. | Price, \$ |
|--------------------------------------|----------|-------------|-----------|
| GAPDH A RT-PCRmer™ (F1/R1); Exon 2-3 | 10 nmols | 40-1005-10 | 100.00 |
| GAPDH B RT-PCRmer™ (F2/R2); Exon 6-7 | 10 nmols | 40-1006-10 | 100.00 |
| GAPDH C RT-PCRmer™ (F1/R2); Exon 2-7 | 10 nmols | 40-1007-10 | 100.00 |
| GAPDH D RT-PCRmer™ (F1/R3); Exon 2-9 | 10 nmols | 40-1008-10 | 100.00 |

*Please visit www.genelink.com for other RT-PCRmer™ not listed here

RT-PCRmer™ Primer pair for specific amplification of cDNA. Special optimized conditions may be required for certain amplifications

| Product | Size | Catalog No. | Price, \$ |
|--|----------|-------------|-----------|
| human beta actin RT-PCRmer; | 10 nmols | 40-1001-10 | 100.00 |
| rat beta actin RT-PCRmer; | 10 nmols | 40-1002-10 | 100.00 |
| mouse beta actin RT-PCRmer; | 10 nmols | 40-1003-10 | 100.00 |
| beta2 microglobulin RT-PCRmer; | 10 nmols | 40-1004-10 | 100.00 |
| Beta actin control PCR mix (human & rat) | 200 ul | 40-1002-00 | 110.00 |

*Please visit www.genelink.com for other RT-PCRmer™ not listed here

Genemer™ Primer pair for gene or mutation specific amplification. Special optimized conditions may be required for certain amplification

| Product | Size | Catalog No. | Price, \$ |
|---|----------|-------------|-----------|
| Fragile X (spanning CGG triple repeat region) | 10 nmols | 40-2004-10 | 100.00 |
| Huntington Disease (spanning CAG triple repeat region) | 10 nmols | 40-2025-10 | 100.00 |
| Myotonic Dystrophy (spanning CTG triple repeat region) | 10 nmols | 40-2026-10 | 100.00 |
| Friedreich's Ataxia (spanning GAA triple repeat region) | 10 nmols | 40-2027-10 | 100.00 |
| Factor V | 10 nmols | 40-2035-10 | 100.00 |
| Factor VIII (Hemophilia) Genemer™ Pack | 10 nmols | 40-2036-10 | 750.00 |
| STS (Steroid Sulfatase) | 10 nmols | 40-2023-10 | 100.00 |
| HGH (Human Growth Hormone) | 10 nmols | 40-2024-10 | 100.00 |
| Sickle Cell | 10 nmols | 40-2001-10 | 100.00 |
| RhD (Rh D gene exon 10 specific) | 10 nmols | 40-2002-10 | 100.00 |
| Rh EeCc (Rh Ee and Cc exon 7 specific) | 10 nmols | 40-2003-10 | 100.00 |
| Gaucher (various mutations) | 10 nmols | 40-2047-XX | 100.00 |
| Cystic Fibrosis (various mutations) | 10 nmols | 40-2029-XX | 100.00 |
| SRY (sex determining region on Y) | 10 nmols | 40-2020-10 | 100.00 |
| X aliphoid repeat | 10 nmols | 40-2021-10 | 100.00 |
| Y aliphoid repeat | 10 nmols | 40-2022-10 | 100.00 |

*Please visit www.genelink.com for other Genemer™ not listed here

*Please visit www.genelink.com for other GeneProber™ not listed here

**The polymerase chain reaction (PCR) process is covered by patents owned by Hoffmann-La Roche. A license to perform is automatically granted by the use of authorized reagents.

Prices subject to change without notice

All Gene Link products are for research use only.